

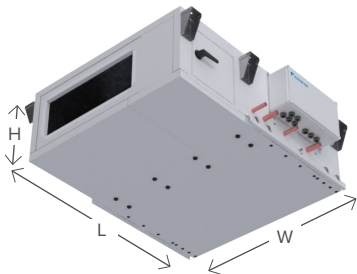
# O X Y G E N 8

Air Handling Unit

## TERRA H & TERRA V



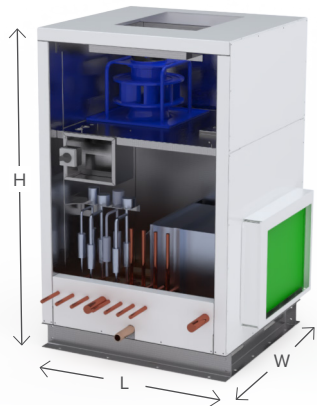
Air Handling Unit | Fan Coil Unit | Make-Up Air Unit | VRV and Hydronic Integration



### Terra H

Model	Dimensions			Airflow		Voltage - Phase
	Length* in.	Width in.	Height in.	Min CFM	Max CFM	
T006	60 – 66	30	20	450	600	208-1
T009	60 – 66	36	20	600	900	208-1
T012	60 – 66	44	20	900	1200	208-1
T015	60 – 66	50	20	1200	1500	208-1
T018	66	50	21	1500	1800	208-1/208-3/460-3
T024	66 – 82	62	21	1800	2400	208-1-208-3/460-3
T032	66 – 100	54	30	2400	3200	208-3/460-3
T040	66 – 100	62	30	3200	4000	208-3/460-3
T048	66 – 100	72	30	4000	4800	208-3/460-3

\*Length varies depending on coil capacity and number of coils.



### Terra V

Model	Dimensions			Airflow		Voltage - Phase
	Length* in.	Width in.	Height in.	Min CFM	Max CFM	
TV006	32	30	51	450	600	208-1
TV009	32	30	51	600	900	208-1
TV012	32	30	51	900	1200	208-1
TV015	33	44	62	1200	1500	208-1/208-3/460-3
TV018	33	44	62	1500	1800	208-1/208-3/460-3
TV024	33	44	62	1800	2400	208-1/208-3/460-3
TV032	36	48	78	2400	3200	208-3/460-3
TV040	36	48	78	3200	4000	208-3/460-3
TV048	36	48	78	4000	4800	208-3/460-3
TV060	36	69	78	4800	6000	208-3/460-3
TV072	36	69	78	6000	7200	208-3/460-3
TV084	36	69	78	7200	8400	208-3/460-3
TV100	36	77	80	8400	10000	208-3/460-3

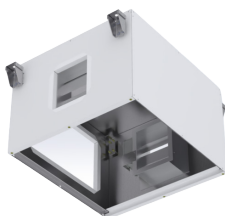
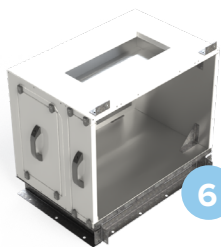
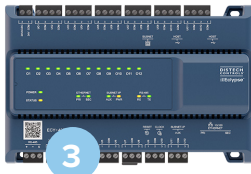
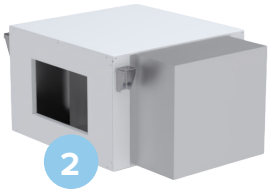
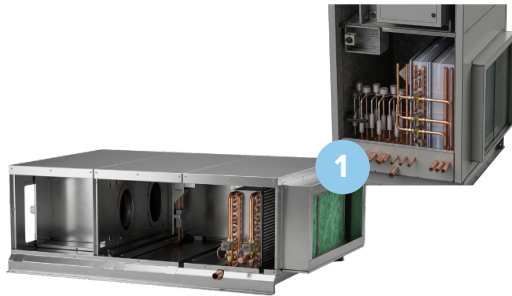
\*Length does not include 3" external filter rack

Note: Terra H and V systems can be paired with a Daikin heat pump outdoor unit using a DX coil only for 1:1 systems or a Daikin heat recovery outdoor unit and branch selector box(es) in 1:X systems with multiple Terra units connected to one heat recovery ODU – with or without the optional HGRH coil.

# OXYGEN 8

## Air Handling Unit

### TERRA ACCESSORIES



Terra V

Terra H

#### Matched Pair

Terra is certified to be paired with Daikin R32 Emerion units to provide significant advantages in design freedom using built-in safety measures and refrigerant leak mitigation. Terra can be paired with other Daikin and 3rd Party A2L ODU's if UL 60335-2-40 safety requirements are met.

#### Standard Integrations

Terra is available with either a Daikin-approved DX coil, with or without an optional hot gas reheat (HGRH) coil with factory-mounted integration kits and factory-brazed EKEXVA expansion valves or hydronic integration. Available in R32 (standard) and R140a (special).

#### 1. DX with VRV Heat Pump Integration

DX-only Terra units use factory-mounted DX Controller(s) and EKEXV(s) paired with Daikin's outdoor heat pump unit.

#### DX + HGRH with VRV Heat Recovery Integration

Terra units with VRV heat recovery coils use factory-mounted DX and DOAS Controller(s) and EKEXVA(s) paired with Daikin's outdoor heat recovery unit for up to 32-ton cooling capacity and 16-ton HGRH capacity.

#### Chilled and Hot Water Hydronic Coils

Terra can be configured with chilled, hot or a combination chilled water/hot water coil. The hydronic valves and actuators are provided by the factory.

#### 2. Electric Pre- and Post-Heater

SCR controlled electric coils are available for pre-heating entering air when outdoor temperatures are below 17°F. Option for single-circuit power supply to the unit from the pre-heater. Pre-heat and optional post-heat can be used for backup heating purposes.

#### 3. Standard Factory-Mounted Controls

Terra units come standard with factory-mounted DDC (Distech) controls with pre-programmed algorithms.

#### 4. Temperature and Humidity Control Options

Discharge air temperature control and dewpoint control, room temperature and humidity control.

#### 5. Airflow Control Options

Constant volume, constant duct pressure control, outdoor air modulation via CO<sup>2</sup> sensor and optimal start.

#### 6. Optional: Mixing Box

Modulating return and fresh air dampers for mixed air ventilation modes and/or 100% recirculation and enthalpy economizer.