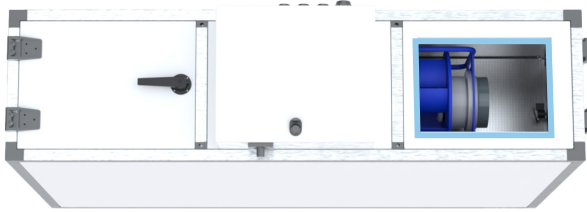


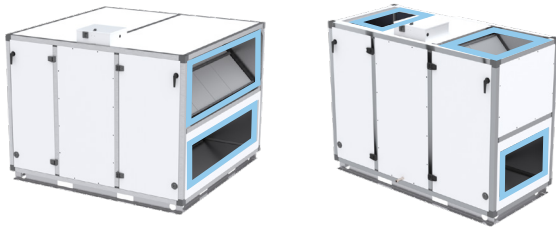
# Nova Standard Customization Options

**The ventilation solution that works for you.** Nova's standard customization options allow you to make fresh air fit into any space. To learn more, please contact your Regional Sales Manager or our Applications Engineering Team.

## Inlet Customization



Inlets for horizontal units can be off the side, front, or back of the unit as standard for any application. Special drawings are required for applications with coupled heaters and non-side inlets.



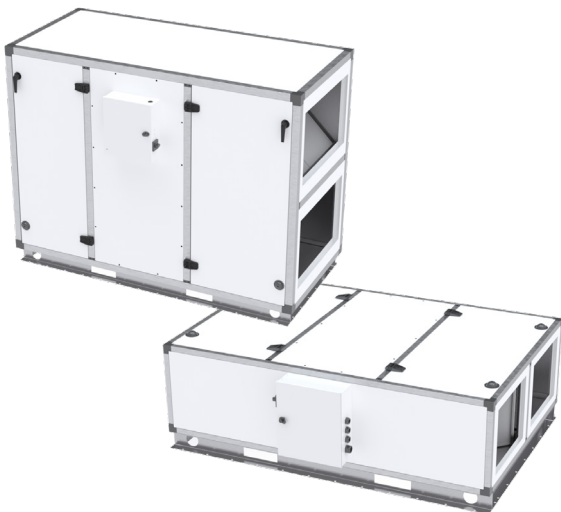
Inlets for vertical units can be off the side or off the top. Bottom inlets are only available for outdoor units (downshot connections)

## Mounting and Access



Horizontal units can be provided with top swing doors for access to the filters and fans. Hanging brackets are no longer included, and hanging is by others. An optional base frame may be provided.

## Control Box Options



The control box for vertical units is provided on the top for indoor units and the front for outdoor units. The control box may be moved to the front of the unit for indoor applications.

A control box for horizontal units is always on the front of the unit, slightly offset from the center.

Option to move the control box onto a 10 or 25ft wire harness.

# Ventum Standard Customization Options

**The ventilation solution that works for you.** Ventum's standard customization options allow you to make fresh air fit into any space. To learn more, please contact your Regional Sales Manager or our Applications Engineering Team.

## Inlet Customization

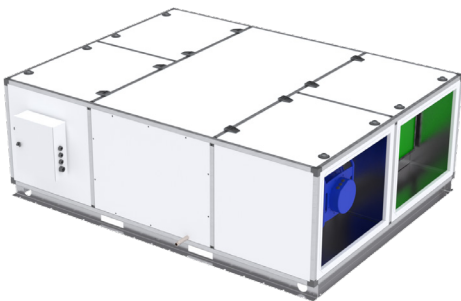


Special front/rear inlets are only available for SA and EA. RA and OA cannot be changed to front/rear.

## Mounting and Access

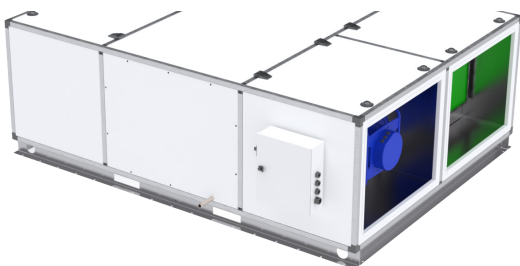


Side access doors can be provided for filters and fans. Hanging brackets are no longer included, and hanging is by others. An optional base frame can be provided.



Top access with upswing doors can be provided. This option can be provided with on a base frame or with hanging brackets.

## Control Box Options



The control box is standardized on the front of the unit, offset to the SA side. This can be moved to the EA side as a special.

Option to move the control box onto a 10 or 25ft wire harness.