

Commercial Product Line Comparison

At Oxygen8, we help create healthy spaces for people to live, work, and play in an energy efficient way.

	<div>Nova • 325 – 8,100 cfm</div> <div>Ventum Lite • 200 – 1200 cfm</div> <div>Ventum • 350 – 3,000 cfm</div> <div>Ventum+ • 1,200 – 10,000 cfm</div> <div>Terra • 425 – 4,800 cfm</div>				
Heat (H) or Enthalpy (E) Recovery**	E	H/E	H/E	H/E	
Core Type See Notes for Descriptions					
Model Number Format	A/B/C##	H04+	H05+	V##	T##
Low Profile Design	•	•	•		•
Indoor Model	•	•	•	•	•
Outdoor Model	•			•	
Orientation: Horizontal (H) or Vertical (V)	H/V	H	H	V	H
Integrated DDC Controls (Distech)	•	Partial*	•	•	•
Daikin VRV (DX / HGRH) Integration See Notes for Limitations	•		•	•	•
Factory Mount and Wiring of Daikin VRV AHU Integration Kit	•		•	•	•
Factory Brazing of EKEXV Valve onto DX/HGRH Coil	•		•	•	•
Hydronic Coil Integration	•		•	•	•
Decoupled Cooling Coil Module	•				
Externally Coupled Cooling Coil(s) Module			•		
Integrated Draw-Through Coils				•	•
Ceiling Mount	•	•	•		•
Floor Mount	•			•	•
Wall Mount (Special option; mount engineering by others)	•				
Roof or Curb Mount (Optional Downshot Connections)	•			•	
ECM Fans	•	•	•	•	•
Single Power Circuit: Electric Heater	•	•	•	•	•
Single Power Circuit: Daikin VRV Integration Kit				•	•
Optional Core Bypass Damper	•		•	•	
Configurable Duct Connection Locations	•		Limited	Limited	Limited
Double Wall Foam Injected Panels	•		•	•	•
Filters: MERV 13 Supply Air / MERV 8 Return Air	•	•	•	•	•
Manufactured in British Columbia	•	•	•	•	•

Notes

Horizontal orientation refers to air ducts horizontally aligned with side openings. Vertical orientation refers to ducts aligned vertically with side connections. Top and bottom connections are available as optional with select offerings, see “Configurable Duct Connection Locations”.

ERV with W Controller: Minimum 850 cfm, ERV with D Controller: Minimum 1,000 cfm†

Terra with W Controller: Minimum 450 cfm, Terra with D Controller: Minimum 600 cfm†

†Based on 95F/75F ambient conditions. Contact Oxygen8 for more information.

Core Types  Crossflow Core (Standard Efficiency)  Counterflow Core (High Efficiency)

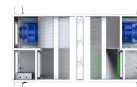
**Heat (H) refers to sensible only, Enthalpy (E) refers to sensible + latent recovery

*Ventum Lite is has controllable fans speeds using a Distech wall-mounted thermostat.

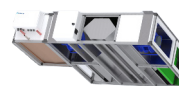
Nova



Ventum Lite



Ventum



Ventum+



Terra



For custom configurations, please contact Oxygen8 for more information.

To learn more about our solutions, visit us online by scanning the QR above or at oxygen8.ca

oxygen8.ca | @oxygen8canada